

HANDY CROWN® BRUSHES (漢得克牌毛刷) 系列

漢得克(HANDY CROWN)一代表油漆工具新潮流的名牌。

漢得克牌毛刷—這裡所介紹的毛刷系列,根據不同的塗料和用途進行分類,便于選擇。

每一個產品,都是採用精心挑選的原材料,在嚴格的質量管理下製造而成,

具有良好的塗料吸收率和排出率,可提高您的工作效率,保證了您的塗裝均勻美觀。

Handy Crown is a new brand carrying out the new ideas into the paint tool industry.

Handy Crown's valuable and user-friendly products are developed based on the voice of the users through the years of research and experience in the market.

●Silky Brush (柔絲毛刷)



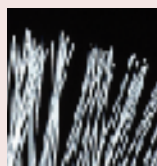
採用經磨峰加工的PBT化纖,具有良好的油漆含有率及吐出率,可提高您的工作效率。

操作性能良好,可塗出均勻美觀漆面。

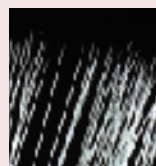
適用於大面積施工。

The tapered PBT filament guarantees good paint absorption, smooth paint output and beautiful finish with even paint thickness.

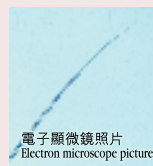
Better workability, higher efficiency, wider painting area.



未經過磨峰加工的
PBT化纖絲
The non-tapered
PBT filament.



經過磨峰加工的
PBT化纖絲
The tapered
PBT filament.



電子顯微鏡照片
Electron microscope picture

商品號 CODE	外形 STYLE	規格 SIZE
202010 0004	平板 Flat	4"
202010 0006	平板 Flat	6"

●Wonder Brush (萬能用柔絲毛刷) 水性·油性通用

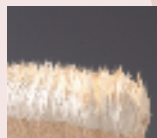


使用精選的山羊毛和PBT化纖絲進行配比組合,其主要特點是:可兼用于油性塗料和水性塗料。

毛條吸附塗料量大,柔軟而具有彈性,且腰部強度能使毛條形狀迅速恢復,體現了優良的操作性能。

By using the mixed filaments of selected goat hair and PBT, this brush is widely applicable to oil and water paints.

With goat hair's good absorption and PBT's elasticity, this brush achieves excellent workability.



一般的毛刷:
使用後的毛刷形狀

100% goat brush:
Filament:less elastic



萬能用柔絲毛刷:
使用後的毛刷形狀

Wonder brush:
Filament:elastic

商品號 CODE	外形 STYLE	規格 SIZE
202000 0080	平板 Flat	F-80
202000 0100	平板 Flat	F-100
202000 0120	平板 Flat	F-120

●HANDY CROWN Brush (漢得克毛刷) 油性專用



使用100%精選的自然山羊毛,毛條含塗料量和吐出量大。

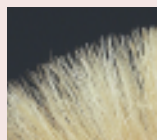
塗料遮蓋力強,塗刷後的刷邊線很直,塗層表面光滑毛條不易斷裂和產生掉毛,工作效率高。

100% natural goat hair brush. Lint-free.

Good paint absorption and release. Excellent forming of paint film.

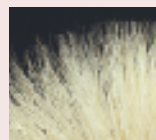
Assures smooth and fine finish.

Superior workability.



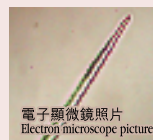
一般的羊毛刷:
沒有毛峰

Ordinary goat hair brush:
No treatment to the top of the filament



漢得克毛刷:
有毛峰·路份足

Handy Crown's brush:
Good points of natural goat hair preserved



電子顯微鏡照片
Electron microscope picture

商品號 CODE	外形 STYLE	規格 SIZE
203000 0080	平板 Flat	F-80
203000 0100	平板 Flat	F-100
203000 0120	平板 Flat	F-120



●木部用 (适用于木面) For wood painting



使用精選山羊毛, 毛峰柔軟、細膩。
最適用於塗木質結構用的清漆、底色塗料等。

Uses selected fine and soft goat hair.
Fine and beautiful completion.
Appropriate for wood paints such as varnish and oil stain.

商品號 CODE	外形 STYLE	規格 SIZE
201010 0015	平板 Flat	S-15
201010 0030	平板 Flat	S-30
201010 0050	平板 Flat	M-50
201010 0080	平板 Flat	F-80
201010 0120	平板 Flat	F-120

●鐵部用 (适用于鋼鐵面) For iron surface painting



使用數種略粗的混合化纖維, 毛峰經過精細加工, 使塗漆更順暢。適合於塗鐵門、窗沿、扶手等高粘度的塗料。

Brush heads, mixed with several thick chemical fibers in which heads processed.
Appropriate for iron painting such for iron door, window frame, handrail, etc.

商品號 CODE	外形 STYLE	規格 SIZE
201110 0030	斜型 Angular	S-30
201110 0050	斜型 Angular	M-50
201110 0070	斜型 Angular	L-70
201010 0080	平板 Flat	F-80

●外裝用 (适用于外裝修—厚板刷) For exterior painting (Thick type)



使用100%富有彈性的豬鬃, 彈性好, 最適用於塗外裝修用的高粘度塗料。毛刷比較厚、含漆量大、可提高大面積塗漆時的工作效率。堅固耐用。

Uses 100% pure high elastic bristle.
Appropriate for high-viscosity paint used in exterior painting.
Good paint absorption and durability.
Effective for wide painting area.

商品號 CODE	外形 STYLE	規格 SIZE
201210 0015	平板 Flat	1"
201210 0030	平板 Flat	2"
201210 0050	平板 Flat	3"
201210 0080	平板 Flat	4"

●內裝用 (适用于內裝修) For interior painting



使用具有彈性的PBT絲和山羊毛, 塗刷面能保持均勻, 祇塗一遍就可得到良好的效果。可用于油性、水性、速乾性塗料、特別適合室內塗漆時使用。

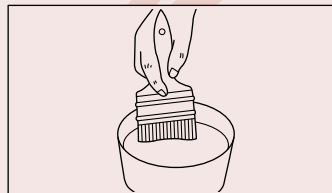
Uses a mixture of PBT fiber and goat hair. Assures even coating.
Fine finish. Applicable to solvent oil paints (SOP), emulsion paints (EP) and dry-fast paints. Best for interior painting.

商品號 CODE	外形 STYLE	規格 SIZE
201310 0030	平板 Flat	S-30
201310 0050	平板 Flat	M-50
201310 0070	平板 Flat	L-70
201310 0075	平板 Flat	F-75

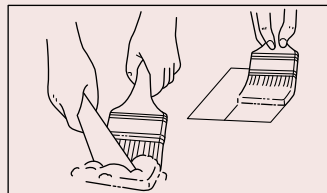
●刷子的最佳使用方法 Proper brush usage



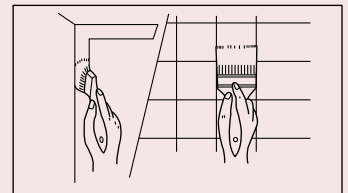
①先將毛刷上的“餘毛”和灰塵除掉, 然後用手將一下刷毛。
Remove extra hair or dirt from the brush, then squeeze the brush through hands.



②用將要使用的塗料適量的稀料浸泡, 使毛刷適應該稀料。
Soak brush in liquid thinner or water applicable to the paint until the brush gets attached with the liquid sufficiently.



③讓毛刷吸2/3左右的塗料, 然後將毛刷中的空氣擠排掉, 在紙上刷幾下, 使毛刷適應該塗料。
Let the brush absorb the paint until the paint reaches 2/3 of the brush's absorption limit, then drive out the air from the brush by a spatula. Start painting after the brush is accustomed to paint on a paper.



④先塗縱向, 即由上到下塗, 然後塗橫向, 使被塗面的塗料均勻, 之後再塗縱向。
Move the brush vertically up and down, then move the brush horizontally for the paint films to be widely spread thoroughly. Move the brush up and down again for the finish up.